



6867 Sugar Rum Ridge Rd
Roanoke, VA 24018
(540)400-7157

Restoration Report

Date: June 2005

Client Name: Gauldin
Address:

Telephone:

Object Description: Steamer Trunk; Canvas with leather. Contains a 2 compartment open interior shelf. The shelf had a cover. It is now missing.

Dimensions: Trunk – Height 24”; Length 35”, Width 20 ½ “
Shelf – Height 5 ½ “; Length 32 ¾ “; Width 17 ¾ “

Materials

Primary wood: Most of the wood is covered with fabric. The substrate is suspected to be pine.

Secondary Wood: N/A

Veneer: The primary wood is covered with stained canvas.

The interior is covered with fabric and canvas liner.

Finish: The finish on the canvas and leather banding tested out to be shellac.

Hardware: The corner caps, latches, and decorative pieces are steel and were brass plated.

Attachments: There are 2 primary leather straps. There are 2 leather side handles.

Object Condition

General Condition: The condition of the primary wood is excellent except for the interior shelf. The shelf has gouged areas of wear.

The condition of the canvas covering is very good.

The condition of the leather banding is excellent.

The condition of the steel hardware is very good.

The condition of the leather straps is fair but still serviceable.

The condition of the interior canvas & paper lining is fair to good.

There are stains but no mould. There are tears and worn spots but not sufficient damage to warrant replacement. There is a typical musty interior odor and stains from moisture and foreign matter.

Moisture content of the trunk is 11%-12% except for the trunk interior bottom which is 14%-15%.

Structural condition: Excellent

Coatings condition: Very good. There is color and finish missing from the lower portions of the exterior canvas. There is minor crazing in a few areas on the shellac leather banding.

Adhesives condition: N/A

Original Condition Photos



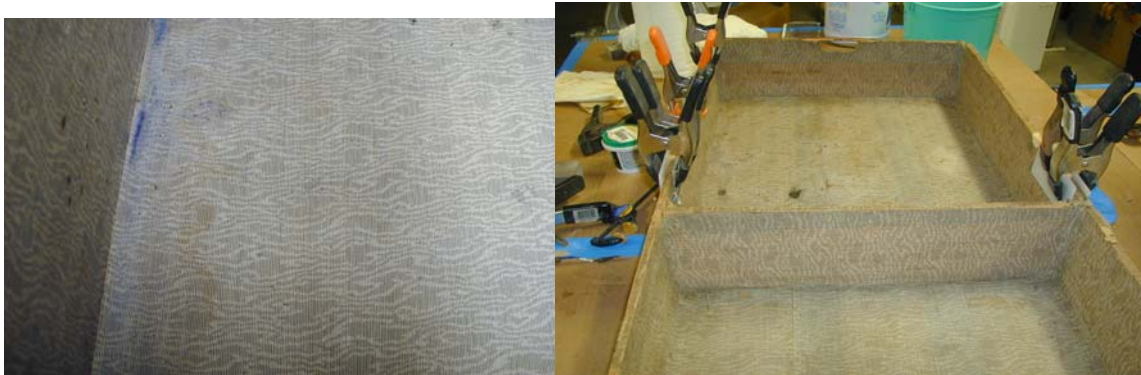


Treatment Response

Cleaning protocol – Interior lining

A number of cleaning and stain removal processes were tested. The most effective was ammonia and water. But I am disappointed in the results. There was very little benefit.

Photos after cleaning are below, but neither the before or after photos adequately show the age stains. The client has opted to leave the existing lining in order to retain the piece's historic integrity.



Cleaning Protocol - Hardware

The hardware is steel that was brass plated. Most of the brass plating has worn off and minor rust has attacked most hardware pieces. All rust was treated with phosphoric acid to arrest the rust. The client has opted to leave the hardware uncolored and simply coat with shellac for protection.

Cleaning Protocol – Leather

All Leather was cleaned with saddle soap

Cleaning Protocol – canvas

The canvas exterior was cleaned with Murphy's oil soap, then mineral spirits, then alcohol to re-amalgamate any crazed shellac areas.

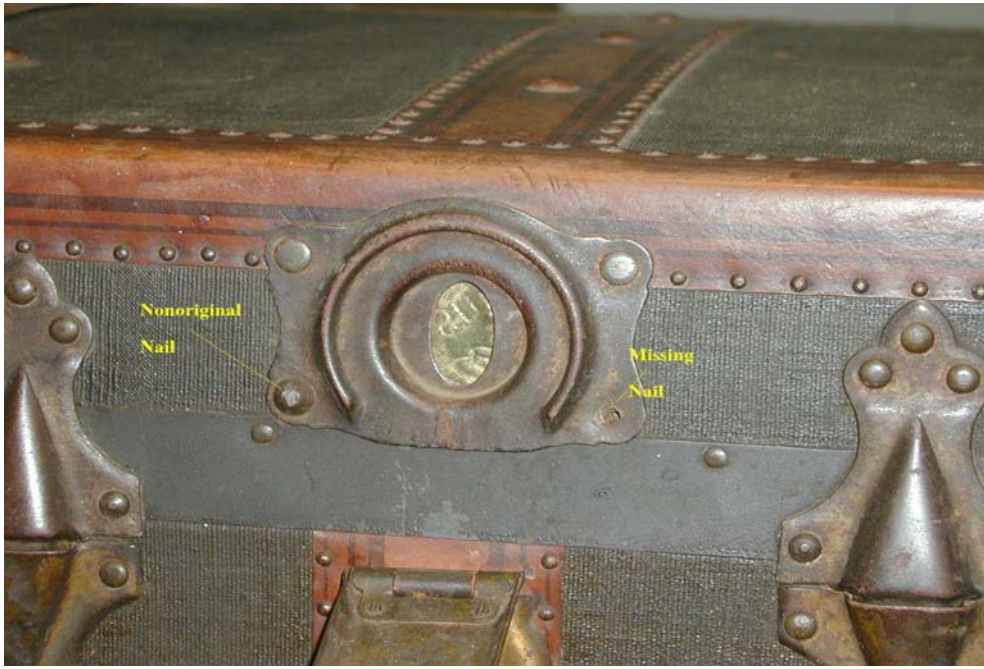
Repairs Performed

1. Lock – Exterior

At one point in the trunk's history, the trunk was locked and someone did not have the key to open it. The 2 bottom nails were removed and the interior of the lock was pushed out. (See the 2 photos below)

I will replace the missing nail but leave the non-original nail since it is a good repair.
The interior of the lock was repaired poorly.

Exterior of the lock



2. Lock – Interior

I discovered that the interior brass plate was a canning jar lid. I can not purchase another plate without replacing the entire locking mechanism. This would remove the original lock and cause damage to the piece. I don't want to leave a hole in the interior. I fit the hole with a pine replacement and carved an oval hole to match the lock opening.

Interior of the lock – previous repair
(The brass plate is a canning jar lid)



Wood replacement



3. Shelf Damage

The interior shelf has 4 areas of wood damage on the top edges. The wood was worn or broken away. My original intent was to leave the damage as is, so as not to alter the integrity of the piece. After re-consideration, I decided that leaving the damage would not be consistent with the look of a well maintained antique. There are 2 acceptable means of making the repair.

- a. Scarf joint a like piece of wood into the damage. This would mean that I would have to remove some of the original wood to make a flush surface. This is an intricate repair. It would add additional cost above the estimate and I prefer not to remove anything original.
- b. Fill the damaged area with synthetic wood. This is low cost and reversible. In fact, there is little structural strength. It will be damaged easily. I chose this repair and touched up the color to make it look as old as the original piece.

Damage



Repair



4. Missing side handle

A new handle was purchased and colored to match the aged opposite handle. The handle was dyed with burnt umber alcohol dye, sealed with blonde shellac, glazed with mahogany stain, sealed with shellac, glazed with chocolate brown glazing stain, and a final coat of shellac.



Finishing protocol

1. Three bottom and 1 back wood slat were sanded, stained with burnt umber wiping stain and 3 coats of varnish were applied for moisture protection. See photo below.
2. The leather banding was cleaned. Much of the pin striping was missing. Pin striping was touched up with raw umber gel stain. The banding was then stained with burnt umber wiping stain. Blonde waxed shellac was applied for protection.

Cleaned banding



Restored banding



3. The canvas was stained with Tri-Clad Raw Umber stain. Areas of heavy wear and moisture damage caused uneven stain penetration. Color was unified with Old Masters Raw Umber gel stain.

Stained canvas



Two coats of blonde de-waxed shellac were then applied to all exterior surfaces and hardware.

Finished Trunk



Respectfully submitted by
Richard K. Patch, AIC Member
Astonish Restoration