



**4240 Old Cave Spring Road
Roanoke, VA 24018
540-769-6070**

Restoration Report

Date: February 15, 2009

Client Name: Brandon Oaks Lutheran Church

Object Description.

Circa 1850 Lutheran Church replica made from the original wood of the church. The church was torn down in the 1970's to make a retirement community on that land. The replica was made by the church members.

Dimensions: 5 feet square and 5 feet tall

Materials

Primary wood: Cedar logs 3 inches round 3x4 inch shingles

Secondary Wood: N/A

Veneer: N/A

Finish: Stained dark brown with a Varnish topcoat

Hardware: 12 Volt miniature candles (12)

Attachments: Furniture: altar, benches, pulpit, woodstove

Object Condition

General Condition - Good

The roof: most of the shingles were in place and intact. Many shingles were cupped due to wood shrinkage.



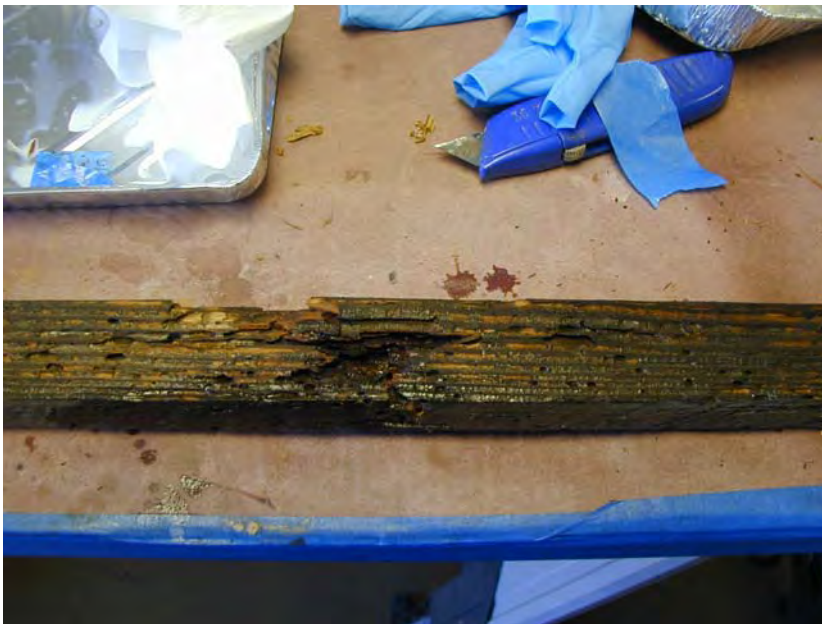
Approximately 40 shingles were broken and needed replacing.

The logs: generally good condition but some ends were broken off.



The windows: several broken panes and missing muntins.

There is evidence of prior termite damage. Some of the termite damage was so extensive that treatment was required. The furniture was in good condition. The electrical system was in fair condition.



Termite damage

Structural Condition.

There was some evidence of shifting in the walls but that was stabilized.

Coatings Condition -Good

The color has not faded. There is color missing on broken pieces.

Adhesive Condition
N/A.

Treatment Response

Cleaning Protocol

The church and its contents were inspected, inventoried and vacuumed. Entire structure was cleaned with Murphy's oil soap and water.

Repairs Performed

PC Petrifier Wood Hardener (wood consolidator epoxy) was used on broken outside slats to mitigate termite damage.



Wood glue was used on smaller broken pieces throughout the project.

Lighting was restored. Replacement bulbs 12 of 12 volt bulbs were purchased at Rick's Hobby Shop on Williamson Road, Roanoke, VA.

Krylon Brand Spray paint in color name: Crafter's Brass was sprayed on interior light fixtures.

Walls were stabilized with long lag bolts through the entire height of the walls.

Windows were removed, cleaned, repaired and, finally, reinstalled onsite. Three windows had to be re-built.

Missing/ broken roof tiles were replaced by handcrafted tiles made of balsa wood, given a scratch texture and stained with Chemcraft International Inc. Brand, color: warm brown stain and sprayed with Mohawk brand dark brown toner.

Interior:

Furnishings were cleaned with Murphy's oil soap and water, and re-glued as needed



Finish Protocol

One coat linseed oil was applied to the exterior. A dark oil/varnish blend was created and used to equalize color



Delivery

The church was delivered on February 13, 2009. In the process of installation several shingles were damaged and needed repair. The windows were glued in place and the furniture was installed. The lighting was activated and the roof was placed after shingle repair was completed. Workspace was left clean and ready for viewing.



Base setup and furniture placement

Roof placement after shingle repair



Respectfully submitted by
Richard K. Patch, AIC Member
www.astonishrestoration.com
February 14, 2009